

Research Article

## Description of some plant parasitic nematodes from fruit orchards of West Azerbaijan, Iran

Hadi Ghorbanzad<sup>1</sup>, Ramin Heydari<sup>1\*</sup> and Ebrahim Pourjam<sup>2</sup>

1. Department of Plant Protection, College of Agriculture and Natural resources, University of Tehran, Karaj, Iran.

2. Department of Plant Pathology, Faculty of Agriculture, Tarbiat Modares University, Tehran, Iran.

**Abstract:** In order to identification of plant parasitic nematodes associated with plants in fruit orchards of West Azerbaijan province, Iran, a survey was conducted during 2011 and 2012. Nematodes were extracted from soil and root samples by using centrifugal-flotation and Whitehead's tray, transferred to glycerin and mounted in permanent slides. Morphological and morphometrical characters of the specimens were analyzed and measured. As a result, 26 species belonging to 21 different genera of tylenchids (Tylenchomorpha, Nematoda) were identified that are presented. *Mesocriconema surinamense* and *Pratylenchoides crenicauda* are reported for the first time from Iran. Iranian population of *Psilenchus aestuarius* is also illustrated here. *M. surinamense* is characterized by having a disk like head originated from large submedian lobes of lip region and morphometric characters. *P. crenicauda* is the type species of the genus *Pratylenchoides* and distinguished by areolated lateral lines on the tail, short pharyngeal overlap and position of pharyngeal glands. *P. aestuarius* is characterized by rounded and smooth head, presence of post anal intestinal sac in both sexes and several morphometric characters.

**Keywords:** First report, *Mesocriconema surinamense*, *Pratylenchoides crenicauda*, *Psilenchus aestuarius*

### Introduction

West Azerbaijan is one of the western provinces of Iran, bordering Turkey, Iraq and Nakhchivan, and the provinces of East Azerbaijan, Zanjan and Kurdistan. The climatic variety of this province caused considerable variety of garden, agricultural, pasture and forest plants, so is regarded as one of the important agricultural zones in Iran. The most important garden crops of West Azerbaijan are apple, pear, and stone fruits such as sour cherry

and cherry; the province has the third rank of garden crops production in the country (Anonymous, 2010).

Soil pathogens including plant parasitic nematode are of main concern in orchards. Several species of nematodes have been reported from West Azerbaijan (Sturhan, 1977, 1983; Mojtahedi *et al.*, 1980, 1992; Parvizi *et al.*, 1991, Karegar and Geraert 1998; Tanha Maafi *et al.*, 2003; Khezzinejad and Niknam, 2004, Khezzinejad *et al.*, 2006; Nasrollahzade *et al.*, 2008).

A survey was conducted for identification of plant parasitic nematodes associated with plants in fruit orchards of West Azerbaijan province. Several species of plant parasitic nematodes were recovered and subsequently identified

Handling Editor: Dr. Zahra Tanhamaafi

\* **Corresponding author**, e-mail: rheydari@ut.ac.ir

Received: 13 November 2013, Accepted: 10 March 2014

Published online: 11 March 2014

from the rhizosphere of different plants in orchards of the province. Some of them are of economically important nematodes and three species are described and illustrated for the first time from Iran.

### Materials and Methods

During 2011-2012, 150 soil and root samples were collected from the rhizosphere of different orchard plants in West Azerbaijan province. Nematodes were extracted from 200 gr. of soil and root samples using the centrifugal-flotation method (Jenkins, 1964) and Whithead's tray method (Whitehead and Heming, 1965), preserved in TAF (8% formalin and 2% triethanolamine in distilled water), transferred to anhydrous glycerin according to De Grisse (1969) and mounted on permanent slides. Measurements and drawings were made with a research microscope (Olympus BH-2) equipped with a drawing tube and a digital camera.

### Results and Discussion

Based on morphological and morphometric characters, 26 species of plant parasitic nematodes belonging to 21 genera of the infraorder Tylenchomorpha (De Ley and Blaxter, 2002) were identified (Table 1). Among the identified nematodes, *Mesocriconema surinamense* De Grisse and Maas, 1970 and *Pratylenchoides crenicauda* Winslow, 1958 are reported for the first time from Iran and are described here. *Psilenchus aestuarius* Andrassy, 1962 was previously reported from Iran (Mokarram Hesar *et al.*, 2010) without description. It is also being described and illustrated.

***Mesocriconema surinamense* (De Grisse and Maas, 1970) Loof and De Grisse, 1989**  
(Figs. 1, 4A, 4B; Table 2)

#### Description

**Female:** Body tapering slightly towards both extremities, curved ventrally when heat-

killed, cylindrical, anterior end flattened and posterior end rounded. Anastomoses of the annules rare; occurs mostly in the tail region. Lip region with four large submedian lobes, in profile half as broad as first body annulus, laterally connected, which making a disk like head (Figs. 1C-H, 4A, 4B). Labial disc lower than these lobes. First body annulus 17.4 (15-20)  $\mu\text{m}$  in diameter, retrorse or directed outward; a part of a broken annulus visible between lip region and first body annulus. All body annuli retrorse, with smooth to finely rough margins. Oral opening I-shaped, amphidial openings large. Stylet strong and large, metenchium 55 (54-57)  $\mu\text{m}$  long, telenchium with stylet knobs 20.2 (20-21)  $\mu\text{m}$  long. Basal knobs robust, anchor-shaped, 11 (10-12)  $\mu\text{m}$  wide and 4.3 (4-5)  $\mu\text{m}$  high. Orifice of dorsal pharyngeal gland opening 9 (8-10)  $\mu\text{m}$  posterior to stylet base. Pharynx 129.4 (125-132)  $\mu\text{m}$  long. Metacarpus muscular, isthmus narrow and very short, basal bulb saccate. Hemizonid indistinct. Excretory pore opposite to end of the pharynx to two annuli posterior to it. Reproductive system monoprodelfic. Oocytes arranged in single row. Vulva open with bi-lobed anterior lip. Vagina straight, anteriorly directed. Spermatheca empty, weakly developed. Anus located less than half of vulval body width distance from vulva. Tail rounded, slightly dorsally curved at tip with platelets and with one or two protuberances on terminal annulus.

**Male:** Not found.

**Juveniles:** Generally similar to female. Head and body annulus similar to those of female. Posterior edge of annuli smooth to slightly irregular.

#### Discussion

*Mesocriconema surinamense* was originally described as *Discocriconemella surinamensis* by De Grisse and Maas (1970). Loof and De Grisse (1974) transferred *D. surinamensis* to *Macroposthonia* by distinguishing four submedian lobes from the first annuli of head.

De Grisse and Loof (1965) proposed to divide the large genus *Criconemoides* into several genera that *Macroposthonia* de Man, 1880 was among them. This was not recognized by Luc and Raski (1981) when they declared *Criconemoides* and *Macroposthonia* and placed most of the species in the genus *Criconemella* De Grisse and Loof, 1965. Coomans *et al.* (1990) regarded genus *Macroposthonia* as invalid. However, Siddiqi (2000) still considered *Macroposthonia* as valid taxon. Loof and De Grisse (1989) replaced the generic name *Macroposthonia* by the oldest available synonym *Mesocriconema* Andr assy, 1965 and revalidated *Criconemoides* based on the arguments by Loof and De Grisse (1967). Brzeski *et al.* (2002) and Geraert (2008) regarded *M. surinamense* in the list of *Mesocriconema* species. Morphological and morphometric characters of the Iranian population of *M. surinamense* are in congruency with those in original description (see Table 2), with 81-84 annuli, four large submedian lobes, strong and large stylet, direct vagina, open vulva and round tail. Males were not found in the present study and also in the original description of the species but Van den berg *et al.* (1997) described males for the first time from Guyana. *M. surinamense* comes close to *M. antipolitanum* De Guiran, 1963 and *M. yossifovichi* Krnjaic, 1967. It differs from *M. antipolitanum* by having large submedian lobes giving the head a disc-like appearance and also by laterally connection of submedian lobes. It can be distinguishable from *M. yossifovichi* by large submedian lobes and fewer annuli (81-84 vs 95-108). *M. surinamense* was described by De Grisse and Maas (1970) around the roots of forest vegetation in Surinam. It is the first report of this species from Iran. We recovered the population from the rhizosphere of apple trees and poaceae weeds in an orchard in Sardasht, West Azerbaijan province.

***Pratylenchoides crenicauda* Winslow, 1958**

(Figs. 2, 4C, 4D; Table 3)

### Description

**Female:** Body cylindrical, straight or slightly curved ventrally when heat killed. Cuticle about 1  $\mu\text{m}$  thick. Cephalic region continuous and smooth, 10-12  $\mu\text{m}$  width, 3-4  $\mu\text{m}$  height, head bears 3 or 4 annuli and cephalic framework strongly developed. Stylet strong and conus as long as its shaft, stylet knobs broadly rounded sloping posteriorly. Lateral field with six lines at mid-body; four at deirids region, four or six at the end of the esophageal gland and four on tail region. Lateral lines areolated on the tail (Figs. 2E, 2F, 4C). Sometimes lateral field with four incisures in total body length. Procorpus cylindrical, narrowing slightly at junction with median bulb, median bulb oval by well developed valvular apparatus. Deirid 2-3 annuli anterior to excretory pore. Esophageal gland overlaps intestine dorsally, overlap length 22-36  $\mu\text{m}$ . Dorsal gland nucleus larger than subventral glands. The nucleus of dorsal and one of subventral glands located anterior to pharyngeal-intestine valve, the other subventral gland nucleus posterior to the valve. Reproductive system didelphic-amphidelphic, vagina perpendicular to body axis, ovaries with a single row of oocytes. Spermatheca usually difficult to observe, round to oval, axial and empty. Tail cylindrical, with 27-32 annuli, tip with 5-6 coarse annules (Fig. 4D). Phasmids slightly posterior to mid-tail. Hyaline region 9.5-10  $\mu\text{m}$  long.

**Male:** Not found.

### Discussion

Morphological and morphometric characters of the West Azerbaijan population of *P. crenicauda* agree completely with the original description of the species (see Table 3). *P. crenicauda* is distinguished by areolation of lateral lines at tail region, number of annuli on the female tail, short esophageal overlap of the intestine and number of lateral lines. The Iranian

population of the species is characterized by having a variation in number of lateral field incisures; Lateral fields with four incisures that increase to six beyond posterior end of pharyngeal gland, outer bands regularly areolated in tail region (as described by Castillo and Gomez-Barsina, 1988), and several specimens with four lateral lines on total body were also observed. Such variation in number of lateral lines was also mentioned before (Sher, 1970). Males were characterized in original description of the species (Winslow, 1958), but were not found in Iranian population of the species examined here and spermatheca was not functional in females. *P. crenicauda* is close to *P. heathi* Baldwin, Luc and Bell, 1983 and *P. variabilis* Sher, 1970. It differs from *P. heathi* by number of annuli of cephalic region (3-4 vs 4-6). Also, lateral lines are almost completely areolated on the tail in *P. crenicauda*, whereas they are not areolated in *P. heathi*. The nucleus of dorsal and one of subventral glands located at level of or anterior to pharyngo-intestinal valve in *P. crenicauda*, but in *P. heathi* the three nuclei of glands located anterior to the valve. *P. crenicauda* differs from *P. variabilis* by having more tail annuli (27-35 vs 24), shape of the tail, longer body length (617-757 vs 500-660  $\mu\text{m}$ ) and number of lateral lines (4 or 6 vs 4). *P. crenicauda* was described by Winslow (1958) as the type species of the genus *Pratylenchoides*. In this study, it was recovered from the rhizosphere of apple trees in an orchard in Naghadeh, West Azarbayjan province, and reported for the first time from Iran.

***Psilenchus aestuarius* Andrassy, 1962**

(Figs. 3, 4E, 4F; Table 4)

**Description**

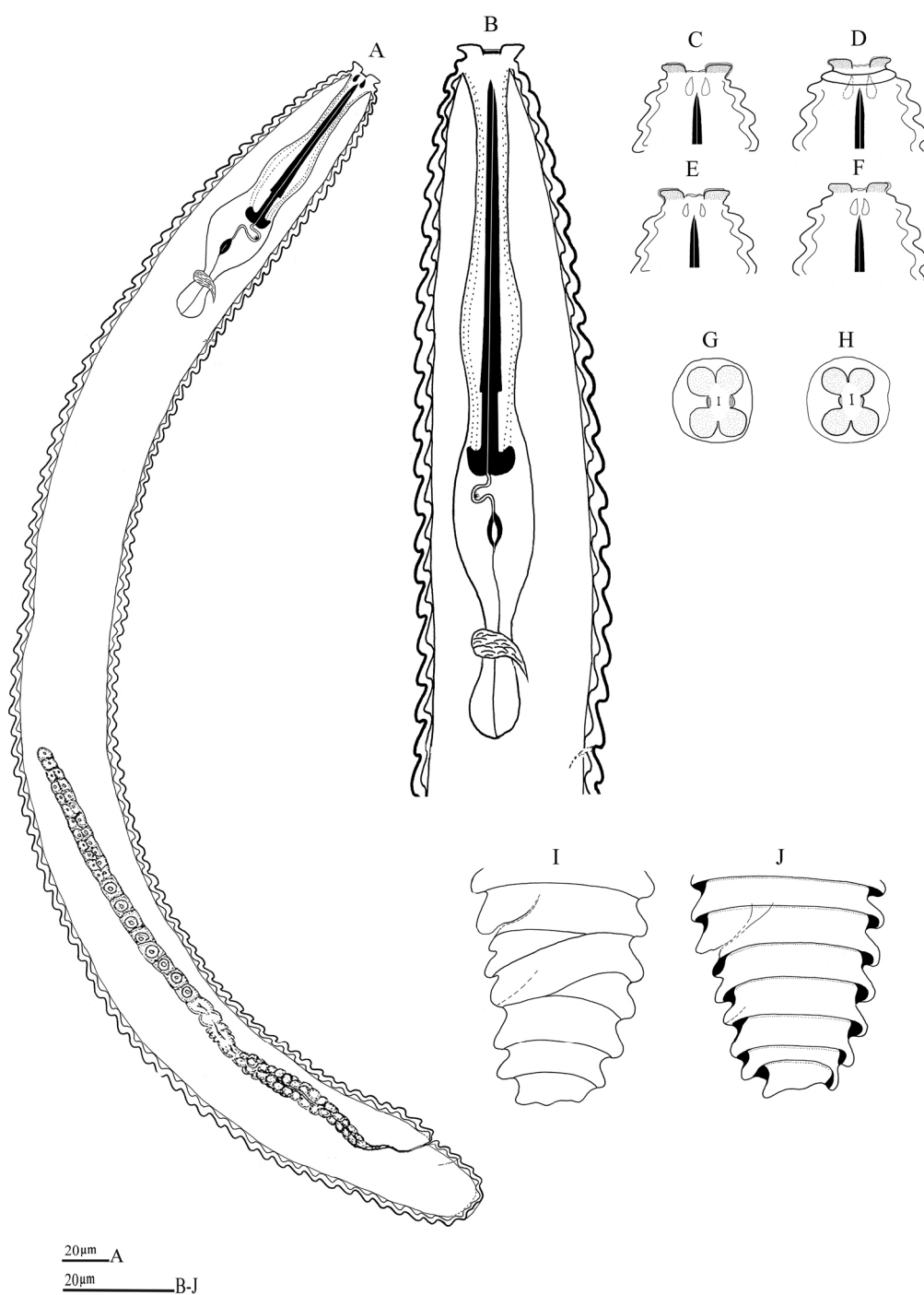
**Female:** Body large, slightly curved ventrally or somewhat open "C" when heat-killed. Anterior end slightly flattened; posterior end conical, elongate. Cuticle with

fine transverse annulation about 1  $\mu\text{m}$  wide at mid-body, inner layer of cuticle marked by even finer striae. Lateral field marked by four incisures, occupying 8-9  $\mu\text{m}$  of body width; the two internal incisures fainter than the external ones, and the outer lines often weakly areolated. Amphids slit-like, located laterally on the head, behind the lateral lips. Head smooth, often bears one annul near its base, anteriorly truncate. Cephalic framework weak; head 3-4  $\mu\text{m}$  high, 7-8  $\mu\text{m}$  in width, not set off from body contour (Figs. 3F, 4E). Stylet delicate, without knobs, anterior portion shorter than half the length of the shaft. Orifice of dorsal pharyngeal gland opens about 4-5  $\mu\text{m}$  behind base of stylet. Procorpus cylindrical, much longer than the isthmus. Median bulb muscular and well developed. Isthmus slender, circuited by nerve ring behind the median bulb. Basal bulb pyriform, always set off from intestine. Cardia voluminous, hemispheric. Excretory pore located at 94-115  $\mu\text{m}$  from anterior end. Deirids clearly visible at level of excretory pore. Reproductive system didelphic-amphidelphic, vulva transversely located in a slight depression, vagina perpendicular to body axis, uterus with crustaformeria followed by a well developed functional spermathecae, filled with rounded sperms. Posterior part of intestine forms two lobes overtaking beyond linkage of intestinal lumen with rectum (Figs. 3D, 4F). Tail thick, terminus rounded, sometimes slightly clavate. Phasmid punctiform located at 16-38  $\mu\text{m}$  distance from anus.

**Male:** Body slightly ventrally curved after fixation. General morphology similar to those of females but slightly shorter. Posterior part of intestine forms two lobes overtaking beyond linkage of intestinal lumen with rectum. Bursa 2-3 cloacal body widths long. Tail conical, straight, gradually tapering over its whole length; terminus clavate.

**Table 1** List of nematode species identified in present study, sampling sites and sample sources.

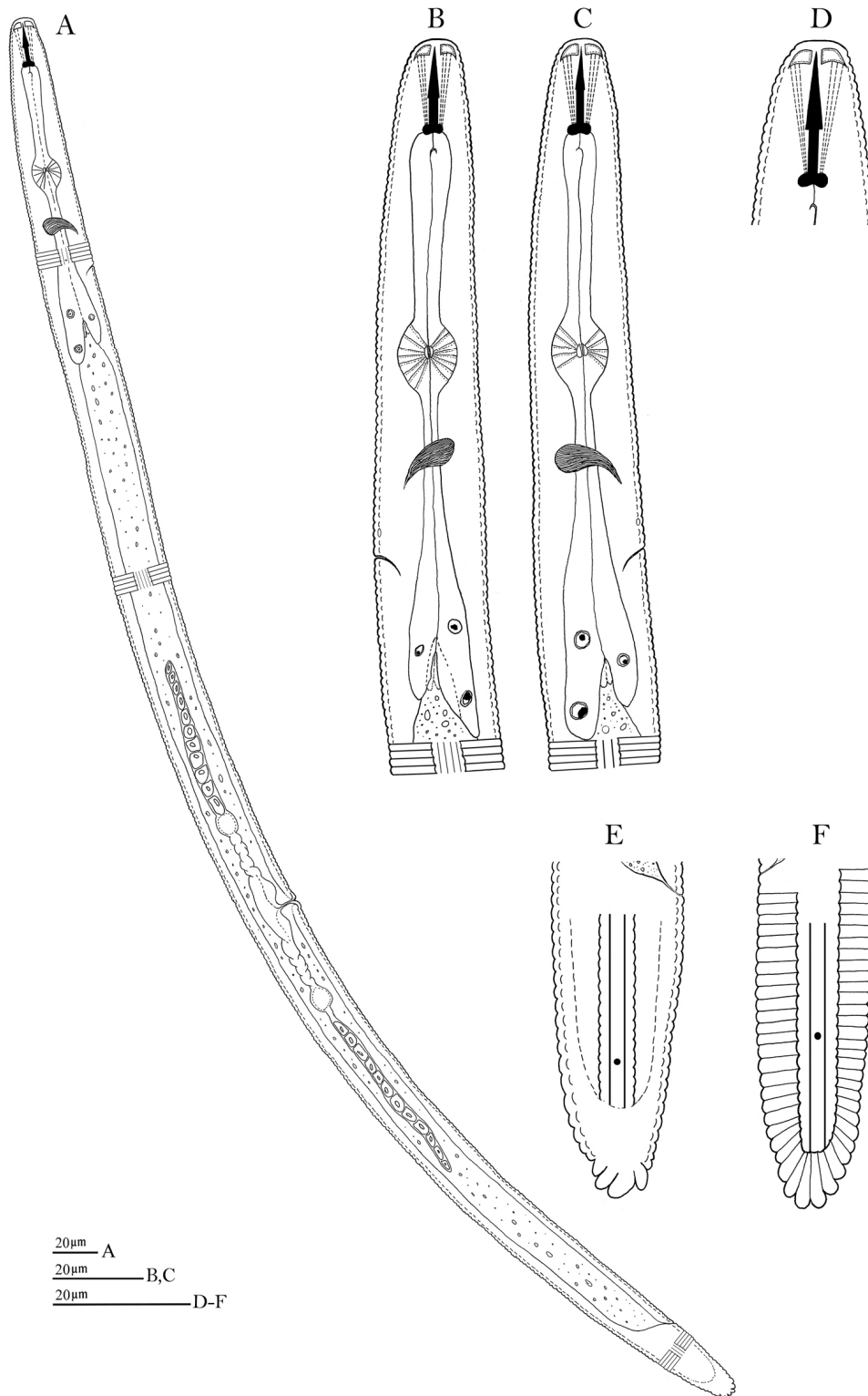
Species	Source	Locality
<i>Aphelenchoides absari</i>	Apple, Almond	Urmia, Naghadeh
<i>Aphelenchoides limberi</i>	Almond	Oshnavieh
<i>Aphelenchus avenae</i>	Almond, Walnut, Apple	Naghadeh, Mahabad, Bukan
<i>Basiria breylla</i>	Apple	Mahabad
<i>Boleodorus thylactus</i>	Peach, Alfalfa	Sardasht
<i>Costenchenus costatus</i>	Walnut, Apple	Naghadeh, Piranshahr
<i>Criconemoides xenoplax</i>	Peach, Sour cherry	Miandoab
<i>Discotylenus brevicaudatus</i>	Apple, Cherry	Naghadeh, Oshnavieh
<i>Ditylenchus myceliophagus</i>	Alfalfa, Apple, Cherry	Urmia, Naghadeh, Sardasht
<i>Filenchus andrassyi</i>	Nectarine	Salmas
<i>Filenchus vulgaris</i>	Walnut, Apricot	Shahid dez, Bukan
<i>Helicotylenus exallus</i>	Apple, Beet	Urmia, Naghadeh
<i>Hemicycliophora sturhani</i>	Apple	Miandoab
<i>Mesocriconema surinamensis</i>	Apple, Poacea weeds	Sardasht
<i>Merlinius microdorus</i>	Grape, Apple, Cherry	Urmia, Bukan, Oshnavieh
<i>Nagelus hexageramus</i>	Sour cherry, Beet	Khoy
<i>Neopsilenchus magnidens</i>	Almond, Cherry	Piranshahr
<i>Paratylenus similis</i>	Cherry, Apple	Naghadeh, Khoy
<i>Pratylenchoides crenicauda</i>	Apple	Naghadeh
<i>Pratylenchoides ritteri</i>	Grape, Apricot	Mahabad, Urmia
<i>Pratylenchus penetrans</i>	Walnut	Sardasht
<i>Pratylenchus thornei</i>	Peach, Apple	Salmas, Oshnavieh
<i>Psilenchus aestuarius</i>	Apple	Urmia
<i>Psilenchus hilarulus</i>	Almond, Grape	Bukan, Miandoab
<i>Tylenchorhynchus maximus</i>	Nectarine	Salmas
<i>Zygotylenus guevara</i>	Almond, Grape, Apple	Naghadeh, Urmia, Oshnavieh



**Figure 1** *Mesocriconema surinamense* (Female): A: Entire body; B: Anterior end; C-F: Head in lateral view; G, H: "en face" view; I, J: Tail in lateral view.

**Table 2** *Mesocriconema surinamense*. comparison of morphometric data (measurements in  $\mu\text{m}$ ) for populations from Iran, Surinam and Guyana.

Origin Characters	West Azerbaijan Province	De Grisse and Mass (1970)	Van den berg et al (1997)	
	Female	Female	Female	Male
<b>n</b>	10	20	8	10
<b>L</b>	548 $\pm$ 34.1 (482-596)	447 (365-530)	441 $\pm$ 30.2 (395-495)	412 $\pm$ 37.5 (389-442)
<b>a</b>	12.1 $\pm$ 0.3 (11-13.2)	10 (7-12)	9 $\pm$ 0.4 (9-10)	21 $\pm$ 3.5 (18-23)
<b>b</b>	4.2 $\pm$ 0.2 (3.9-4.6)	3.9 (3.4-4.5)	4	5
<b>c</b>	31.2 $\pm$ 2.3 (24.9-40.9)	27 (19-39)	22 $\pm$ 2.2 (18-26)	13 $\pm$ 0.8 (12-14)
<b>c'</b>	0.6 $\pm$ 0.1 (0.5-0.7)	-	-	2.5 $\pm$ 0.2 (2-3)
<b>V</b>	94 $\pm$ 0.6 (93.2-94.6)	92 (90-93)	91 $\pm$ 0.7 (90-92)	-
<b>Stylet</b>	73 $\pm$ 1.9 (70-75)	73 (70-78)	67 $\pm$ 1.6 (64-69)	-
<b>m</b>	77.2 $\pm$ 1.2 (75.7-78.4)	-	-	-
<b>Oeso.</b>	129 $\pm$ 3.1 (125-132)	114 (106-125)	-	-
<b>BW</b>	41.8 $\pm$ 1.8 (40-45)	-	-	-
<b>R</b>	83 $\pm$ 2.3 (80-86)	82 (78-89)	88 $\pm$ 2.2 (85-91)	176 $\pm$ 8.4 (160-188)
<b>Rst</b>	14 $\pm$ 1.1 (13-15)	15 (14-16)	16 $\pm$ 1.2 (15-18)	-
<b>ROes</b>	23 $\pm$ 1.3 (22-24)	22 (19-24)	24 $\pm$ 1.6 (22-26)	-
<b>Rex</b>	22 $\pm$ 1.2 (21-23)	23 (21-25)	25 $\pm$ 1.5 (24-28)	53 $\pm$ 3.1 (49-59)
<b>Rv</b>	7 $\pm$ 0.6 (6-8)	8 (8-9)	8 $\pm$ 0.7 (7-9)	-
<b>Ran</b>	4 $\pm$ 0.5 (4-5)	5 (4-6)	5 $\pm$ 0.5 (4-6)	-
<b>RVan</b>	2 $\pm$ 0.5 (2-3)	3 (2-3)	2 $\pm$ 0.5 (2-3)	-
<b>Tail</b>	18 $\pm$ 1.7 (14-22)	17 (11-23)	20 $\pm$ 1.8 (17-24)	-
<b>St/L</b>	13.5 $\pm$ 1.5 (12.5-14.5)	16 (14-20)	15 $\pm$ 1.7 (12-17)	-
<b>St/Oes</b>	56.4 $\pm$ 1.2 (56.0-56.8)	64 (58-69)	-	-
<b>Spicule</b>	-	-	-	31 $\pm$ 0.9 (30-32)
<b>Guber.</b>	-	-	-	6.3 (6-7)

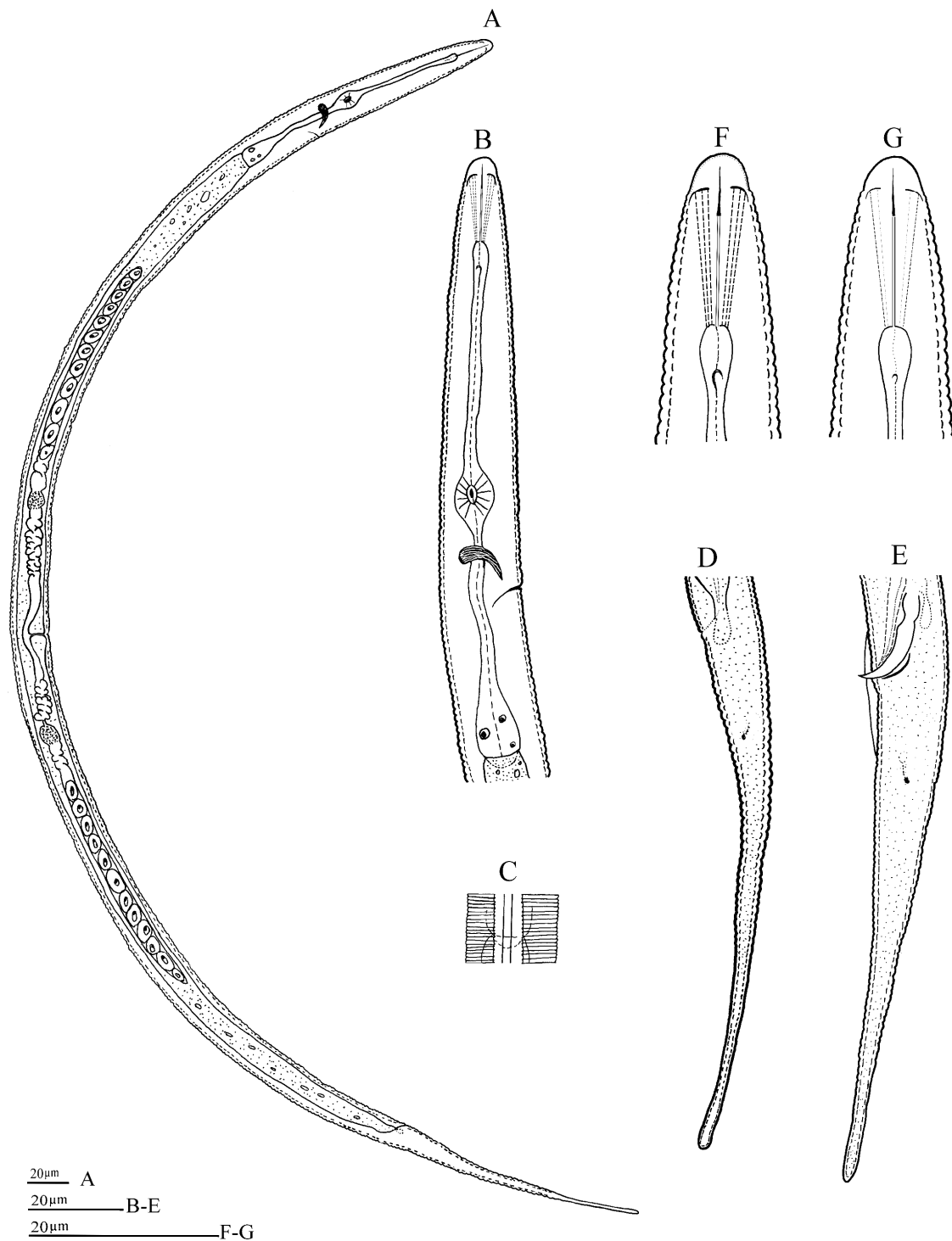


**Figure 2** *Pratylenchoides crenicauda* (Female ): A: Entire body; B, C: Neck region; D:Anterior end; E, F: tail.

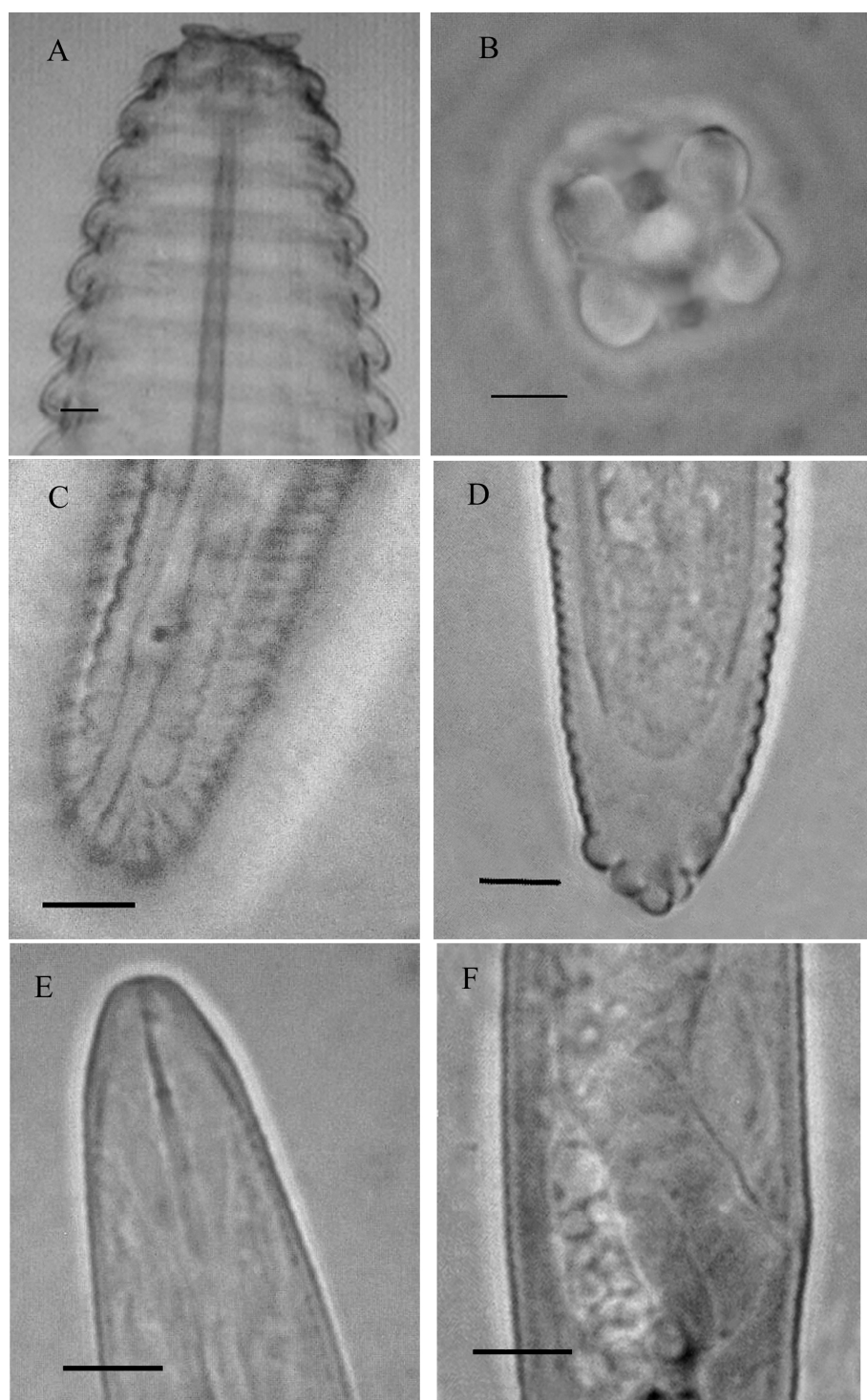


**Table 3** Morphometric characters of *Pratylenchoides crenicauda* population from West Azerbaijan and comparing with other populations (measurements in  $\mu\text{m}$ ).

Origin	West Azerbaijan Province	Castillo and Gomez, 1988		Winslow, 1958		Sher, 1970	
Characters	Female	Female	Male	Female	Male	Female	Male
<b>n</b>	12	9	4	24	6	15	4
<b>L</b>	690 $\pm$ 42.9 (617-757)	668 $\pm$ 77.6 (578-797)	516 $\pm$ 68.2 (431-594)	720 (570-910)	690 (640-740)	640 (530-860)	660 (610-720)
<b>a</b>	26.9 $\pm$ 2.5 (23.7-30.3)	28.5 $\pm$ 1.5 (26.4-31.3)	30.3 $\pm$ 3.2 (26.9-34.3)	26.3 (19-32)	28 (26-33)	25 (21-29)	-
<b>b</b>	5.0 $\pm$ 0.2 (4.7-5.3)	4.2 $\pm$ 0.6 (3.6-5.6)	4.4 $\pm$ 0.6 (3.7-5.0)	4.6 (3.3-6.4)	5.1 (4.5-6.2)	4.6 (4.1-5.2)	-
<b>b'</b>	4.1 $\pm$ 0.2 (3.9-4.6)	4.3 $\pm$ 0.06 (4.2-4.3)	4.4	-	-	4.2 (3.5-5.2)	5.5 (5.2-5.7)
<b>c</b>	17.9 $\pm$ 2.1 (14.6-20.6)	14.3 $\pm$ 1.1 (12.9-16.5)	11.5 $\pm$ 1.2 (10-12.8)	15.3 (12.9-17.6)	13 (11.7-15)	15 (13-18)	-
<b>c'</b>	2.2 $\pm$ 0.2 (2.0-2.5)	2.8 $\pm$ 0.3 (2.6-2.4)	3.4 $\pm$ 0.3 (3.1-3.8)	-	-	-	-
<b>V</b>	59.7 $\pm$ 1.6 (57.5-62.8)	57 $\pm$ 1.6 (54-59)	35 $\pm$ 4.2 (31-40)	57.5 (54-61)	-	58 (56-62)	-
<b>Stylet</b>	20.6 $\pm$ 1 (19.0-22)	20 $\pm$ 0.5 (19-21)	17 $\pm$ 0.7 (16.6-18)	22	-	22 (20-23)	21 (20-21)
<b>MB</b>	53.5 $\pm$ 1.3 (51.4-55.7)	-	-	-	-	-	-
<b>E. Pore</b>	116 $\pm$ 5.6 (110-125)	103 $\pm$ 19.8 (83-125)	95 $\pm$ 3.2 (91-98)	-	-	-	-
<b>Oeso.</b>	139 $\pm$ 5.1 (127-143)	157 $\pm$ 9.4 (142-170)	117 $\pm$ 3.7 (114-122)	-	-	-	-
<b>Overlap.</b>	28.2 $\pm$ 1.7 (22-36)	-	-	-	-	-	-
<b>Head-Vulva</b>	412 $\pm$ 25.3 (367-456)	-	-	-	-	-	-
<b>BW</b>	25.8 $\pm$ 1.7 (24-29)	23.5 $\pm$ 3.1 (19-29)	-	-	-	-	-
<b>Vulva - Anus</b>	239 $\pm$ 23 (200-283)	-	-	-	-	-	-
<b>Tail</b>	39 $\pm$ 4.3 (34-45)	47 $\pm$ 6.7 (36-57)	45 $\pm$ 5 (39-50)	-	-	-	-
<b>Tail Annule</b>	30.4 $\pm$ 4 (27-35)	29 $\pm$ 2.2 (27-32)	-	-	-	28-36	-
<b>Spicul.</b>	-	-	22 $\pm$ 1.4 (20-23)	-	-	-	22 (20-24)
<b>Guber.</b>	-	-	5.7 $\pm$ 0.4 (5.5-6.2)	-	-	-	6 (4-7)



**Figure 3** *Psilenchus aestuarius*: Female (A, B, C, D, F). A: Female entire body; B: Neck region; C: End of oesophagus (Lateral view); D: Tail shape; F: Anterior end. Male (E, G). E: Male tail; G: Anterior end.



**Figure 4** Photomicrograph of identified nematode species: *Mesocriconema surinamense* Female (A and B), A: Anterior end, B: *en face* view of lip region; *Pratylenchoides crenicauda* Female tail (C and D); *Psilenchus aestuarius* Female (E and F), E: Anterior end, F: Intestine end region showing posterior intestine sac. (Scale bar = 5  $\mu$ m).

**Table 4** Morphometric characters of *Psilenchus aestuarius* population from West Azerbaijan and comparing with other populations (measurements in micrometer).

Characters	West Azerbaijan Province		Andrassy, 1962		Brzeski, 1989	
	Female	Male	Female	Male	Female	Male
<b>n</b>	10	7	-	-	23	5
<b>L</b>	902 ± 92.8 (778-1008)	892 ± 88.9 (768-993)	1009-1067	1021	1377 ± 183.2 (1018-1701)	1107 (987-1216)
<b>a</b>	43.4 ± 3.9 (38.9-48.9)	55.3 ± 4.2 (50.2-61.1)	43.2-50.1	56.6	41 ± 2.6 (35-46)	41 (36-45)
<b>b</b>	6.6 ± 0.7 (5.7-7.5)	6.7 ± 0.7 (5.9-7.8)	6-8.9	6.9	8 ± 1 (6.2-9.6)	6.8 (6.3-7.4)
<b>c</b>	6.8 ± 0.4 (6.2-7.4)	7.5 ± 0.5 (7.3-8.2)	8.9-10.7	8.3	8.6 ± 1 (6.8-10.3)	7.2 (6.1-7.9)
<b>c'</b>	10.1 ± 0.7 (9-10.6)	9.8 ± 0.6 (9.4-10.1)	-	-	6.7 ± 1 (5.2-8.7)	7 (6.2-7.9)
<b>V</b>	48.7 ± 1.6 (47.2-52.2)	-	47.9-56.3	-	48 ± 1.7 (44-52)	-
<b>V'</b>	57.2 ± 1.8 (54.8-60.4)	-	-	-	55 ± 2.2 (50-57)	-
<b>Stylet</b>	16.1 ± 0.8 (15-17)	15.5 ± 0.7 (15-16)	-	-	16.6 ± 0.8 (15-18)	15 (14-16)
<b>MB</b>	55.3 ± 1.5 (52.6-57.9)	56.1 ± 1.6 (52.9-58.4)	-	-	59 ± 1.9 (55-62)	60 (58-63)
<b>Oeso.</b>	137.4 ± 7.7 (126-150)	136.3 ± 7.6 (125.3-149.8)	-	-	173 ± 7.6 (156-193)	164 (157-171)
<b>E-pore</b>	107.9 ± 7.4 (94-115)	101.2 ± 7.2 (90.2-111.7)	-	-	143 ± 10.1 (128-160)	133 (124-144)
<b>Head-vulva</b>	439.6 ± 48.8 (374-491)	-	-	-	490 ± 74.3 (348-641)	-
<b>Tail</b>	133.3 ± 9.9 (122-147)	132.4 ± 9.7 (121-145)	-	-	163 ± 25.5 (123-220)	155 (149-163)
<b>Spicule</b>	-	29 ± 1.8 (28-30)	-	28	-	31 (29-34)
<b>Guber.</b>	-	9 ± 0.4 (9-10)	-	9	-	10 (8-12)

## Discussion

Characters of the Iranian population of *P. aestuarius* is in agreement with the original description of the species (see Table 4). *P. aestuarius* is characterized by a rounded and smooth head, position of orifice of dorsal pharyngeal gland and presence of two lobes overtaking beyond linkage of intestinal lumen with rectum. Presence of post anal intestinal sac has not been reported in the original description of the species (Andrassy, 1962) and it was reported by Brzeski (1989), as mentioned by Geraert (2008). *P. aestuarius* comes close to *P. iranicus*

Kheiri, 1970 and *P. hilarulus* de Man, 1921. It differs from *P. iranicus* by distance of the dorsal pharyngeal gland orifice (4-5 vs 7), shape of the lip region (rounded-smooth vs flattened, striated), the post-anal intestinal lobe (present vs absent), and by length of spicules (28-30 vs 33) and gubernaculums (9-10 vs 12). It differs from *P. hilarulus* by presence of post-anal intestinal lobe vs absence, shape of the tail (terminus rounded vs clavate) and by length of spicules (28-30 vs 20-23 μm) and gubernaculums (9-10 vs 6-7 μm). *P. aestuarius* was first reported and described from Budapest, Hungary. In this survey, it was recovered from the rhizosphere of apple trees in

an orchard in the city of Orumieh. Mokarram Hesar *et al.* (2010) reported this species from Mashhad but there is not any description for this population and so comparisons with the West Azerbaijan population was not possible.

### Acknowledgment

This research was supported by University of Tehran. Authors thank Mohammad Reza Atighi from Tarbiat Modares University for his kind help and valuable comments on the manuscript.

### References

- Andrássy, I. 1962. Zwei neue Nematoden-Arten aus dem Überschwemmungsgebiet der Donau (*Danubialia hungaricae*, XIII). *Opuscula Zoologica Budapest*, 4: 2-4.
- Andrássy, I. 1965. Verzeichnis und Bestimmungsschlüssel der Arten der Nematoden Gattungen *Criconemoides* Taylor, 1936 und *Mesocriconema* n. gen. *Opuscula Zoologica Budapest*, 5: 153-171.
- Anonymous, 2010. Agricultural Statistics Yearbook. Tehran, Iran, Ministry of Jihad-E-Agriculture, Statistical and Information Technology Unit.
- Baldwin, J. G., Luc, M. and Bell, A. H. 1983. Contribution to the study of the genus *Pratylenchoides* Winslow (Nematoda: Tylenchida). *Revue de Nématologie*, 6: 111-125.
- Brzeski, M. W. 1989. On the genus *Psilenchus* de Man, 1921, with description of *P. klingleri* sp.n. (Nematoda: Tylenchidae). *Annals of Zoology*, 43: 51-69.
- Brzeski, M. W., Loof, P. A. A. and Choi, Y. E. 2002. Compendium of the genus *Mesocriconema* Andrassy, 1965 (Nematoda: Criconematidae). *Nematology*, 4: 341-360.
- Castillo, P. and Gomez-Barcina, A. 1998. Some species of Tylenchida from natural habitats in Southern Spain. *Nematologia Mediterranea*, 16: 75-86.
- Coomans, A., De Grisse, A., Geraert, E., Loof, P. A. A., Luc, M. and Raski, D. J. 1990. On the use of the generic name *Macroposthonia* de Man, 1880 (Nemata: Criconematidae). *Revue de Nématologie*, 13: 120.
- De Grisse, A. 1969. Redescription ou modification de quelques techniques dans L'étude des nematodes phytoparasitaires. *Mededelingen van de Rijksfaculteit der Landbouwwetenschappen Gent*, 34: 351-369.
- De Grisse, A. and Loof, P. A. A. 1965. Revision of the genus *Criconemoides* (Nematoda). *Mede Landbo Opz Staat Gent*, 30: 577-603.
- De Grisse, A. and Maas, P. W. 1970. *Macroposthonia Longistyleta* n. sp. and *Discocriconemella Surinamensis* n. sp. from Surinam (Nematoda: Criconematidae). *Nematologica*, 16: 123-132.
- De Guiran, G. 1963. Quatre espèces nouvelles du genre *Criconemoides* Taylor (Nematoda Criconematidae). *Revue de Pathologie Végétale et d'Entomologie Agricole de France*, 42: 1-11.
- De Ley, P. and Blaxter, M. L. 2002. Systematic position and phylogeny, In: Lee, D. L. (Ed.), *The biology of nematodes*, Taylor and Francis Ltd. London, UK, pp. 1-30.
- De Man, J. G. 1921. Nouvelles recherches sur les nematodes libres terricoles de la hollande. *Capita Zoologica*, 3-62.
- De Man, J. G. 1880. Die einheimischen, frei in der reinen Erde und im sussen Wasser lebenden Nematoden. *Tijdschrift der Nederlandsche Dierkundige Vereeniging*, 5: 1-104.
- Geraert, E. 2008. *The Tylenchidae of the World*. Gent, Academia Press
- Jenkins, W. R. 1964. A rapid centrifugal-flotation technique for separating nematodes from soil. *Plant Disease Reporter*, 48: 692.
- Karegar, A. and Geraert, E. 1998. The genus *Filenchus* Andrassy, 1954 (Nemata: Tylenchida) from Iran. Species with four lateral lines. *Journal of Nematode Morphology and Systematic*, 1: 1-22.
- Kheiri, A. 1970. Two new species in the family Tylenchidae (Nematoda) from Iran, with a key to *Psilenchus* de Man, 1921. *Nematologica* 16: 359-368.
- Khezrinejad, N. and Niknam, G. 2004. Five species of the family Pratylenchidae from

- sugar beet fields of West Azerbaijan province. Proceedings of the 16<sup>th</sup> Iranian Plant Protection Congress, Tabriz, Iran. P. 162.
- Khezzinejad, N., Niknam, G. and Ghoosta. 2006. Plant parasitic nematodes of sugar beet fields of West Azerbaijan province. Proceedings of the 17<sup>th</sup> Iranian Plant Protection Congress, Karaj, Iran. P. 111.
- Krnjaic, D. 1967. *Discocriconemella yossifovichii* n. sp. (Nematoda: Criconematidae) on grape vine in Yugoslavia. *Zastita Bilja*, 18 (93/95): 155-160.
- Loof, P. A. A. and De Grisse, A. 1967. Re-establishment of the genus *Criconemoides* Taylor, 1936 (Nematoda: Criconematidae). *Mededelingen van de Rijksfaculteit der Landbouwwetenschappen Gent*, 32: 466-475.
- Loof, P. A. A. and De Grisse, A. 1974. Re-establishment of the genus *Criconemoides* Taylor, 1936 (Nematoda: Criconematidae). *Mededelingen van de Rijksfaculteit der Landbouwwetenschappen Gent*, 32: 466-475.
- Loof, P. A. A. and De Grisse, A. 1989. Taxonomic and nomenclatorial observations on the genus *Criconemella* De Grisse and Loof, 1965 *Sensu Luc and Raski*, 1981 (Criconematidae). *Mededelingen van de Rijksfaculteit der Landbouwwetenschappen Gent*, 54: 53-74.
- Luc, M. and Raski, D. J. 1981. Status of the genera *Macroposthonia*, *Criconemoides*, *Criconemella*, and *Xenocriconemella* (Criconematidae: Nematoda). *Revue de Nématologie*, 4: 3-21.
- Mojtahedi, H., Belali Dehkordi, G., Akhiani, A., Barooti, S. and Naderi, A. 1992. Nematodes of the family Tylenchorhynchidae from Iran. *Iranian Journal of Plant Pathology*, 19: 36-56. (In Persian).
- Mojtahedi, H., Sturhan, D., Akhiani, A. and Barooti, S. 1980. *Xiphinema* species in Iranian vineyards. *Nematologia Mediterranea*, 8: 165-170.
- Mokaram Hesar, A., Mahdikhani Moghadam, E., Jose Pereira, T., Mundo Ocampo, M. and Baldwin, J. 2010. Population of *Psilenchus* spp. (Nematoda) from Iran and the description of a new species of the genus. Proceeding of 19<sup>th</sup> Iranian Plant Protection Congress, Tehran, Iran. P. 605.
- Nasrollahzadeh, V., Niknam, G. and Khezzinejad, N. 2008. Some plant parasitic nematodes from rhizosphere of sunflower fields of Khoy. Proceedings of the 18<sup>th</sup> Iranian Plant Protection Congress, Hamedan, Iran. P. 553.
- Parvizi, R., Eshtiaghi, H. and Kheiri, A. 1991. Distribution of sugar beet cyst nematode in West Azerbaijan province. *Applied Entomology and Phytopathology*, 60: 73-79. (In Persian).
- Sher, S. A. 1970. Revision of the genus *Pratylenchoides* Winslow, 1958 (Nematoda: Tylenchoidae). Proceedings of Helminthological Society of Washington, 37: 154-166.
- Siddiqi, M. R. 2000. Tylenchida: Parasites of Plants and Insects. 2nd edition. CABI Publishing.
- Sturhan, D. 1977. First record of the persian sessile nematode, *Cacopaurus pestis* Thorne, in Iran. *Nematologia Mediterranea*, 5: 125-126.
- Sturhan, D. 1983. First records of the genus *Meloidoderita* (Nematoda; Criconematoidea) in Iran, Germany and the Azores. *Nematologica*, 29: 488-489.
- Tanha Maafi, Z. Subbotin, S. A. and Moens, M. 2003. Molecular identification of cyst forming nematodes (Heteroderidae) from Iran and a phylogeny based on ITS-rDNA sequences. *Nematology*, 5: 99-111.
- Van Den Berg, E., Queneherve, P. and Tiedt, L. 1997. New records and descriptions of plant nematodes from rain forest soil in French Guyana, with a first description of males of *Mesocriconema surinamense* (De Grisse and Maas, 1970) Loof and De Grisse, 1989 (Tylenchida: Nemata). *Nematologica*, 43: 341-354.
- Whitehead, A. G. and Hemming, J. R. 1965. A comparison of some quantitative methods of extracting small vermiform nematodes from soil. *Annals of Applied Biology*, 55: 25-38.
- Winslow, R. D. 1958. The taxonomic position of *Anguillulina obtusa* Goodey, 1932 and 1940. *Nematologica*, 3: 136-139.

## معرفی چند نماتد انگل گیاهی از باغ‌های درختان میوه استان آذربایجان غربی

هادی قربانزاد<sup>1</sup>، رامین حیدری<sup>1\*</sup> و ابراهیم پورجم<sup>2</sup>

1- گروه گیاهپزشکی پردیس کشاورزی و منابع طبیعی دانشگاه تهران.

2- گروه بیماری‌شناسی گیاهی دانشکده کشاورزی دانشگاه تربیت مدرس، تهران، ایران.

\* پست الکترونیکی نویسنده مسئول مکاتبه: rheydari@ut.ac.ir

دریافت: 22 آبان 1392؛ پذیرش: 19 اسفند 1392

**چکیده:** به منظور شناسایی نماتدهای انگل گیاهی باغ‌های درختان میوه استان آذربایجان غربی طی سال‌های 91-1390 نمونه‌های خاک و ریشه جمع‌آوری و نماتدها با روش‌های سانتریفوژ و سینی وایتهد جداسازی شدند. پس از تثبیت و انتقال نماتدهای جدا شده به گلیسرین، اسلایدهای دائمی تهیه شد. ویژگی‌های ریخت‌شناسی و ریخت‌سنجی نماتدها بررسی و اندازه‌گیری شد. در نتیجه 26 گونه نماتد انگل گیاهی از 21 جنس شناسایی شد. دو گونه *Mesocriconema surinamense* و *Pratylenchoides crenicauda* که برای فون نماتدهای ایران جدید هستند و گونه *Psilenchus aestuarius* که توصیفی از آن در ایران وجود ندارد، در اینجا شرح داده شده‌اند. *M. surinamense* به واسطه سر دیسکی شکل که در نتیجه برجستگی‌های چهارگانه لبی ایجاد شده و مشخصات ریخت‌سنجی شناسایی می‌شود. *P. crenicauda* گونه تیپ جنس بوده و با فرورفتگی شیارهای عرضی کوتیکول در خطوط جانبی کوتیکول در ناحیه دم، همپوشانی کوتاه مری روی روده و موقعیت هسته‌های غدد مری متمایز می‌شود. *P. aestuarius* به واسطه سر گرد و فاقد شیار عرضی، وجود کیسه عقبی روده در دو جنس و مشخصات ریخت‌سنجی از سایر گونه‌ها متمایز می‌شود.

**واژگان کلیدی:** اولین گزارش، *Mesocriconema surinamense*، *Pratylenchoides crenicauda*، *Psilenchus aestuarius*